

# Duplex Op der Pompel in Mertert

923000€



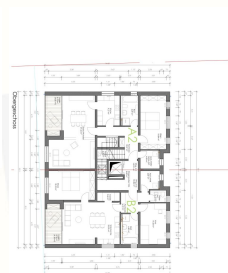
**FOR SALE**

Bedrooms: 4

Bathrooms: 2

Year build:

Surface: 158.30m<sup>2</sup>



New construction in Mertert "Op der Pompel" project Duplex of 158.30m<sup>2</sup> with 4 bedrooms. The "Op der Pompel" project will be built in energy class ABA. Residential units will benefit from indoor and outdoor parking spaces, as well from a garden. Indoor parking: ? 27,500 including VAT 3% VAT For more ...

Energy performance classification:

Thermal insulation class:

CO<sub>2</sub>:

